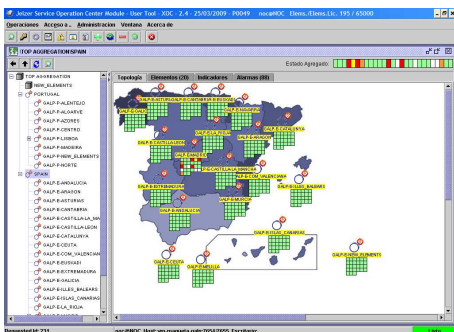


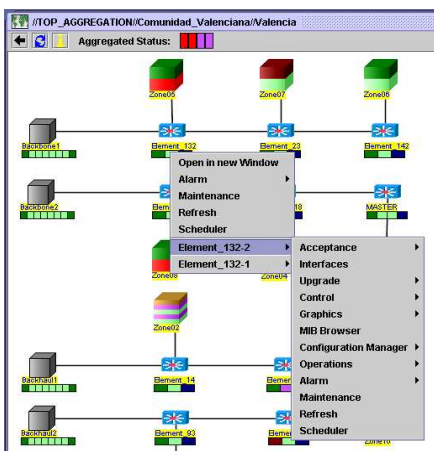
Jeizer XOC is a **Sopra-PROFit** product dedicated to the management of **networks, services** and/or **business**.

Jeizer XOC allows monitoring, provisioning, controlling and inventorying the elements of the customer network, service and/or business.

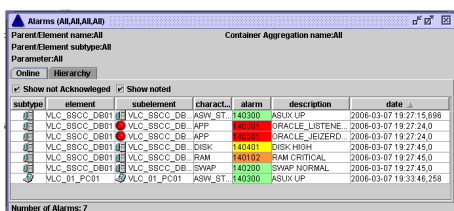
This is the main window of the **Jeizer XOC** java client interface.



Jeizer XOC provides an integrated and custom view of your networks, systems, services and devices.



Jeizer XOC manages the life cycle of the alarms by using three status: Pending, Noted and Acknowledged.



Jeizer XOC is a product aimed to provide an on-line view of services, networks and/or business of a customer. It can provide different views in different levels of the topology, status, events, service indicators, relationships, etc. of the elements of the customer networks, services or business.

Jeizer XOC is commonly used in conjunction with a customizable part in order to specify deeply the management service offered. This way, we offer implementation of this generic product focused in the management of Power Line Networks (*Jeizer XOC Power Line ManagementSolution*) and focused in the management of Generic System Networks (*Jeizer XOC Systems Solution*). We can also offer custom implementations to fulfill customer requirements, for instance integration with the most important NMSs tools, Trouble-Ticketing tools and Workflow tools, or to manage ATM, POS or AMR networks.

Jeizer XOC platform has the following features:

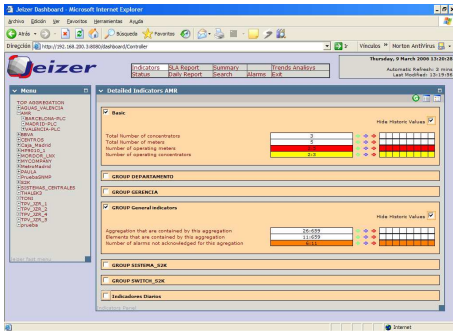
- Written in Java: Supports multiple platforms (Windows, Linux, Solaris, ...)
- Supports multiple databases by using JDBC (Oracle, DB2, PostgreSQL, etc).
- Allows Internet and Intranet access.
- Three-tier architecture.
- Low bandwidth requirements.
- Centralized management of users and profiles.
- Graphical Interface for professional use (Java and Web).
- Open architecture and data model: allows integration with other applications.

Jeizer XOC platform is composed by the following elements:

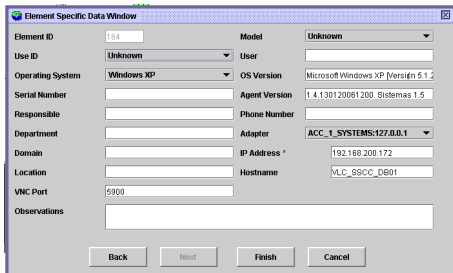
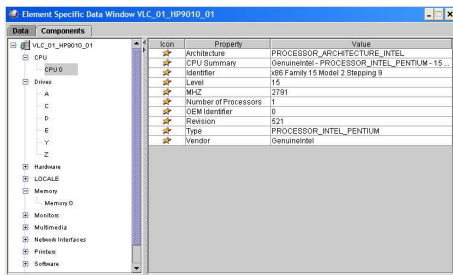
- *Client*. Is the user interface.
- *Server*. Performs the business logic about alarms and status correlations, topology management, users and profiles management, etc.
- *Alarm Manager*. It's a manager for receiving and enqueueing the received alarms.
- *SLA Server*. Calculates service indicators values, generates QoS and SLA alarms, etc.
- *Database*. Stores all the data about topology, historic, elements, indicators, etc.
- *Collector*. It collects status data and variables values from the monitored elements and generates alarms. It can also execute control operations on them, or raise new events depending on the status of the element. Collectors allow scalability in Jeizer deployments. Each collector manages a part of the customer network, service or business.

Jeizer XOC provides two client interfaces: Java client and Web client.

This is the Jeizer XOC web client interface main window.



Jeizer XOC Java client console provides different windows for displaying topology, alarms, indicators, element data, provisioning elements, etc.



For more information:

Sopra Group
C/Antiga Senda Senent 11-2º.
46023. Valencia- SPAIN
Tel: + 34 96 337 90 35
Fax: +34 963 37 81 36

<http://www.jeizer.com>
salesjeizer@sopragroup.com
supportjeizer@sopragroup.com

© Sopra Group Informàtica, SAU, 2001-2009.
All rights reserved. Jeizer, Jeizer XOC, Jeizer Wisconsin Solution, Jeizer Systems Solution and Jeizer Retail are trade marks property of Sopra Group Informàtica, SAU.

Jeizer XOC provides two customizable client interfaces:

- *Jeizer Java console.* Application intended to operate, to provision and to administrate the elements, alarms, the topology and the users.
- *Jeizer Web Console or Dashboard.* Application intended to view the overall status of the network, QoS and SLA management, service performance, etc.

Jeizer XOC also provides two tools for accessing to Jeizer XOC from external applications (both intended for integrators and skilled operators):

- *Jeizer CLI.* It is a command line interface tool for creating, modifying or deleting elements. It allows scripting (for massive provision) and automating processes. I
- *Jeizer Alarm.* It is also a command line interface tool for sending alarms to Jeizer XOC. It allows scripting for sending multiple alarms.

Jeizer XOC Java Client Console offers the following features:

- Easy navigation and multi-explorer enabled.
- Friendly assistants for provisioning elements.
- Custom desktop management.
- Advanced filter for displaying alarms.
- Chronological alarm viewer.
- Alarms life cycle management.
- Displaying graphs of historic values or real time values.
- Advanced profiles and users management.
- Easy to use topology definition tool.
- Alarm and time triggers and schedule of reception of alarms.
- Displaying of QoS and SLA indicators.
- Pop-up menus for executing specific operations in elements.
- Displaying of multiple labels and specific data of elements.
- User's desktop management on the client consoles.
- Deployments management by using provision status. Etc.

Finally, Jeizer XOC is the product that solves the management requirements of customer networks, services and/or business:

- 24 x 7 networks, services and business monitoring.
- Profiles and users management.
- Topology view.
- List of alarms and alarm status management.
- QoS and SLA management.
- Workflow and Trouble-Ticketing integration.
- Deployment management.
- Storage, statistics and display of historic data for problem detection, trend analysis, checking QoS compliance, etc.

